

Windows

Driver Install Manual

Recommended system

Computer with an Intel Core 2 Duo processor or faster

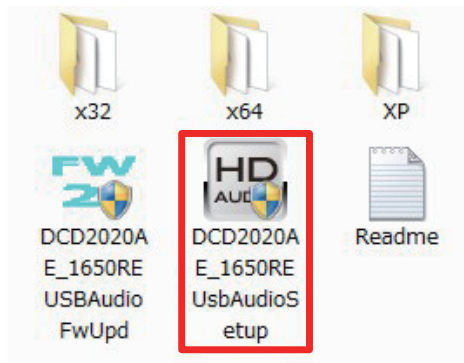
Note: Windows XP 64-bit edition is not supported

NOTE

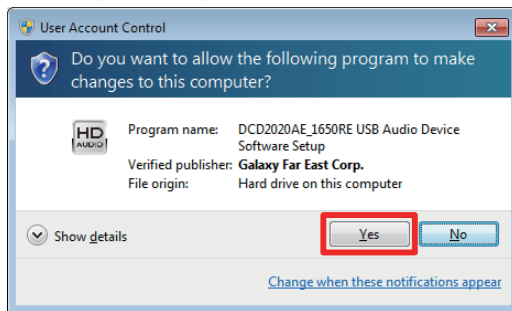
- The dedicated driver must be installed in the computer before DCD-2020AE is connected to a computer. Operation will not occur correctly if connected to the computer before the dedicated driver has been installed. Moreover, if the computer is running Windows XP as its OS, the computer's speed will decrease significantly, and a computer restart may be required.
- Operation may fail in some computer hardware and software configurations.

* The following screen is for Windows7.

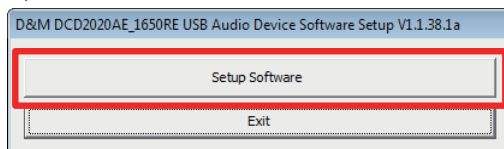
1. Double-click "DCD2020AE_1650REUsbAudioSetup.exe" to start the installation.



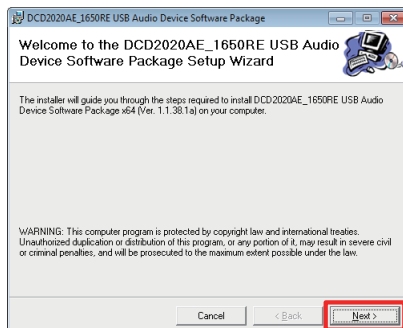
2. When the following window appears, select "Yes".



3. Click "Setup Software".



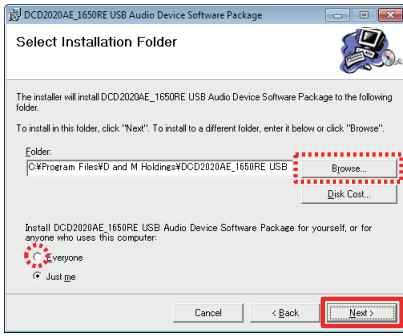
4. Click "Next>".



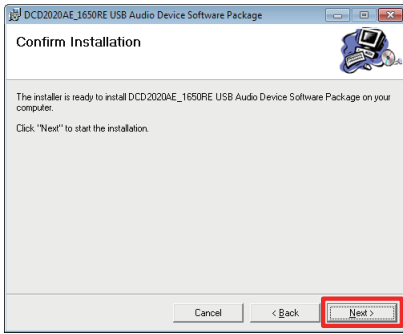
5. Click "Next>".

* To change the installation destination to your desired location, click "Browse...".

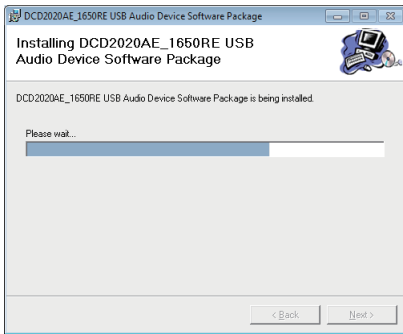
* To allow multiple user accounts to select "DCD-2020AE" as the output destination, select "Everyone".



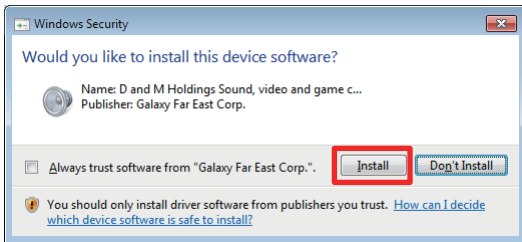
6. Click "Next>".



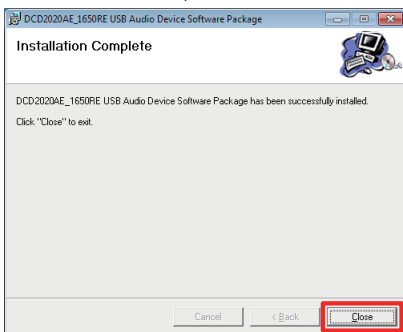
7. The installation starts. Do not perform any operation on the computer until the installation is completed.



8. When the following window appears, click "Install".

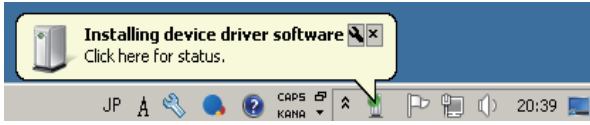


9. When the installation is completed, click "Close".



10. According to the owner's manual "Connecting and playing back from a computer (USB)", connect the computer to the set.

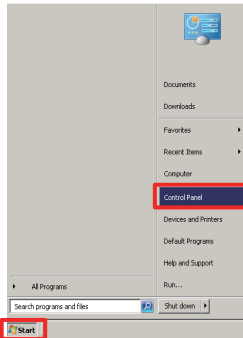
11. The driver is automatically installed (only at the initial connection).



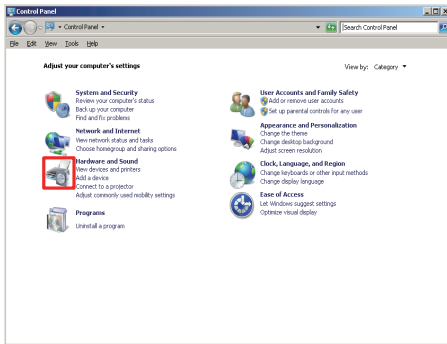
12. Check if the connection is successful, and make settings.

1) Check the connection.

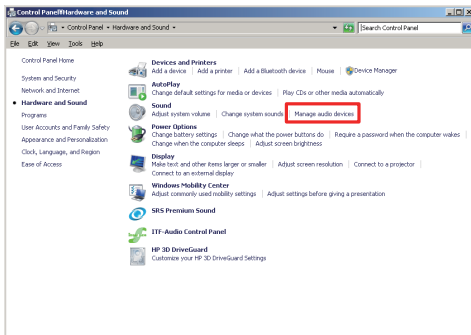
① Click "Start" and then "Control Panel".



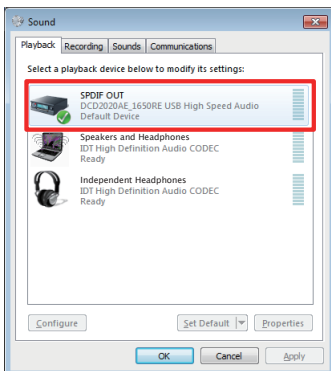
② Click the icon to the left of "Hardware and Sound".



③ Click "Manage audio devices".

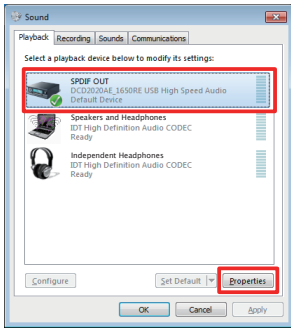


④ Check that "SPDIF OUT" (DCD2020AE_1650RE USB High Speed Audio) is displayed.

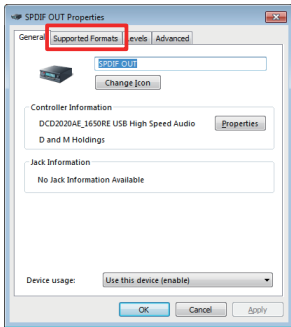


2) Change and optimize the settings.

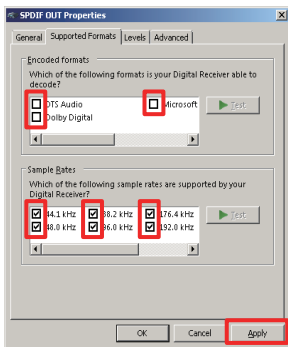
① Click "SPDIF OUT" and then "Properties".



② Click the "Supported Formats" tab.

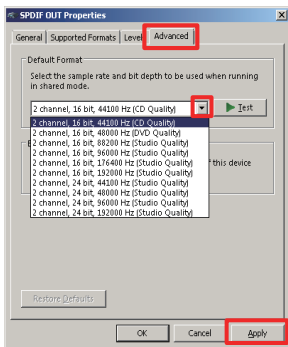


③ Set "Encoded formats" and "Sample Rates" as follows and click "Apply".



④ Select the "Advanced" tab, set the desired sample rate and bit depth from the "Default Format" pull down menu, and click "Apply".

* Audio is output after being re-sampled according to the sample rate and bit depth set here.



⑤ Click "Test". If audio is output from the set, the settings are completed.

