

# DENON®

## envaya mini

### DSB-100

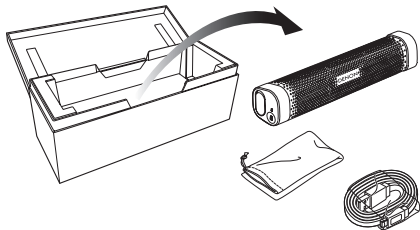
Portable Premium  
Bluetooth Speaker



## Quick Start Guide

## 1. Unpacking the speaker

Carefully unpack your new Envaya Mini speaker and verify that you have the following items.

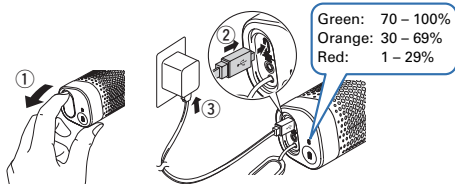


### NOTE

USB to AC power adapter not included.

## 2. Charging the speaker

- ① Open the cap on the left side.
- ② Connect the small end of USB cable to the speaker.
- ③ Connect the large end of the USB cable to a USB to AC power adapter and a power source or the USB port on your computer.

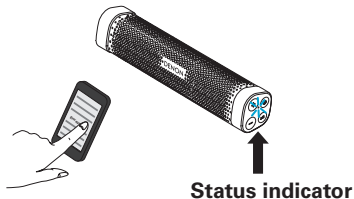


### NOTE

- The rating of adapter should be less than DC 5 V, 2.4 A.
- Must be used with an approved adapter suitable for the countries where the requirement will be applied.

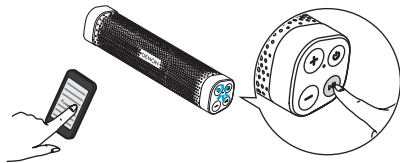
### 3. Playing Music from your Bluetooth Device (Pairing and Connecting)

- ① Activate the Bluetooth settings on you mobile device.
- ② Select "Envaya Mini" from the list of available Bluetooth devices. In a few seconds you will hear a fast 3 note tone from the speaker indicating that it is connected to your device. The status indicator stops blinking and remains illuminated.



### 4. Pairing additional Bluetooth Devices

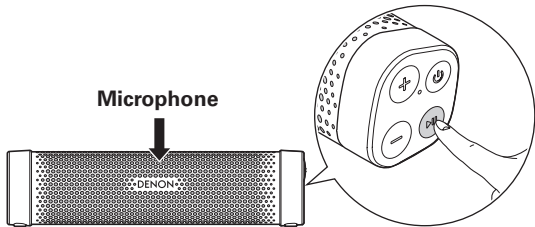
- ① Activate the Bluetooth settings on you mobile device.
- ② Press and hold the ►/|| button for 3 seconds until you hear a 3 tone beep.
- ③ Select "Envaya Mini" from the list of available Bluetooth devices. In a few seconds you will hear a fast 3 note tone from the speaker indicating that it is connected to your device. The status indicator stops blinking and remains illuminated.



## 5. Using the Speakerphone

Answering Calls: Press the ►/|| button on the right side of the speaker.

Ending Calls: Press the ►/|| button again.



To view the complete user manual, please visit [manuals.denon.com/DSB100/ALL/EN/](https://manuals.denon.com/DSB100/ALL/EN/) or scan the QR code below using your smartphone.



## **Basic Troubleshooting**

### **Speaker does not turn on**

- To turn on the speaker, press and hold the power button for 2 seconds.

### **Cannot pair a Bluetooth device with the speaker**

- Power On the speaker then press and hold the ►/■ button for 3 seconds until you hear a 3 tone beep. Make sure your mobile device has Bluetooth On and select “Envaya Mini” from the list of Bluetooth devices.

### **Speaker is turning off automatically**

- To save battery power, the speaker is designed to turn off when no audio is played via Bluetooth for approximately 15 minutes.

### **Speaker is malfunctioning**

- To reset the speaker, turn on the speaker then, press and release the POWER button, ►/■ button and BATTERY button simultaneously. Envaya Mini is reset.

### **Cannot conduct a call**

- Hands-free phone calls cannot be conducted when a cable is connected to the AUX input. Remove the cable and try again.
- Not all mobile phones and Apps support Hands-free phone calling.

**DENON<sup>®</sup>**

[www.denon.com](http://www.denon.com)

D&M Holdings Inc.  
Printed in China 5411 11253 10AD