

DENON

envaya

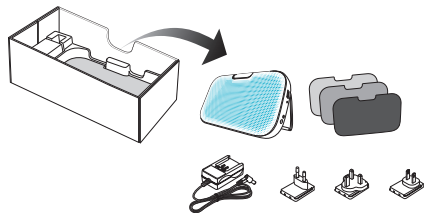
**PORTABLE PREMIUM SOUND
BLUETOOTH SPEAKER**



Quick Start Guide

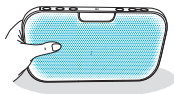
1. Unpacking the Speaker

Carefully unpack your new Envaya speaker and verify that you have the following items.

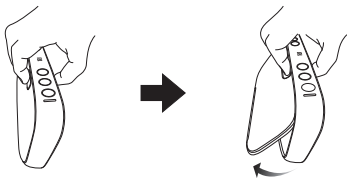


2. Placing the Speaker

Place the speaker on a flat surface facing towards you supporting it with one hand.

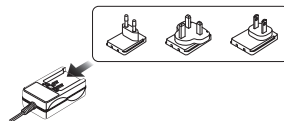


Place the fingers of your other hand across the back top of the speaker and gently “squeeze” to extend the built-in stand from the back of the speaker.



3. Powering the Speaker

- ① Insert the appropriate adapter into the power supply.



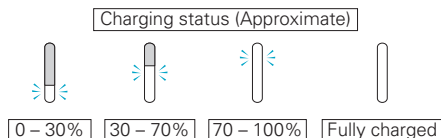
- ② Connect the power cord to the speaker a wall outlet.



Note: The speaker will automatically turn on the first time you connect the power cord and automatically enter Bluetooth Pairing Mode, indicated by a two note beep. The Bluetooth button on the speaker will begin to flash as it waits for a wireless connection from your mobile device.

IMPORTANT

Looking at the white battery status indicator on the top of the speaker (next to the power button), make sure your speaker is fully charged before using it for the first time under battery power.



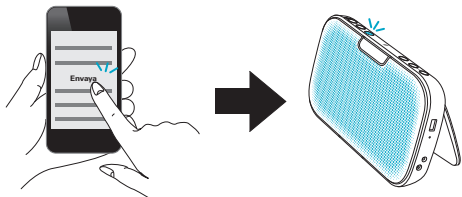
4. Playing Music from your Bluetooth Device (Pairing and Connecting)

- ① Activate the Bluetooth settings on you mobile phone.



- ② Select “Envaya” from the list of available Bluetooth devices.

In a few seconds you will hear a fast 3 note tone from the speaker indicating that it is connected to your device. The Bluetooth button remains illuminated.



- ③ Play music using any app on your device.
The sound will now play from the Envaya wireless speaker.

Basic Troubleshooting

Speaker does not turn on

- To turn on the speaker press and hold the power button for 2 seconds.
- The battery is completely discharged. Connect the AC adapter and recharge the battery.

Cannot pair a Bluetooth device with the speaker

- The Bluetooth device is malfunctioning. Power cycle the device, remove the pairing information and re-pair the speaker to the device.
- This speaker cannot be paired with a 4th device when it is connected simultaneously to 3 Bluetooth devices. Disconnect one of the connected Bluetooth devices before pairing another device.

Speaker is turning off automatically

- No audio is played via Bluetooth for approximately 15 minutes. Power on the speaker by pressing and holding the power button for 2 seconds.

Speaker is malfunctioning

- The speaker needs to be reset. Using a small paper clip, press and release the reset button located on the side of the speaker.
- The speaker needs to be reset to the factory default settings. Turn on the speaker. Press and hold the POWER and VOLUME + buttons together for approximately 4 seconds. The status indicator will blink 4 times to indicate a reset. (Note : All pairing information from Bluetooth devices will be erased.)

For more information, please visit www.denon.com to view the complete Owner's Manual for the Envaya wireless speaker.



DENON

www.denon.com

D&M Holdings Inc.
5411 11162 00AD