

DENON[®]

envaya mini

DSB-100

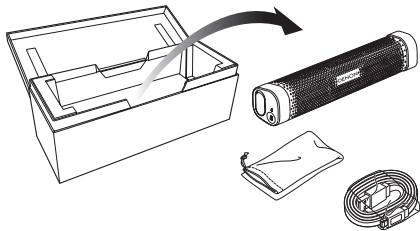
Portable Premium
Bluetooth Speaker



Quick Start Guide

1. Unpacking the speaker

Carefully unpack your new Envaya Mini speaker and verify that you have the following items.



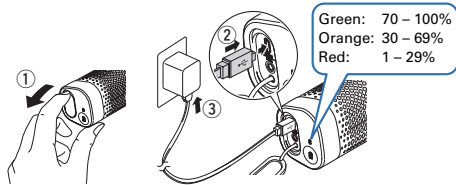
NOTE

USB to AC power adapter not included.

1

2. Charging the speaker

- ① Open the cap on the left side.
- ② Connect the small end of USB cable to the speaker.
- ③ Connect the large end of the USB cable to a USB to AC power adapter and a power source or the USB port on your computer.

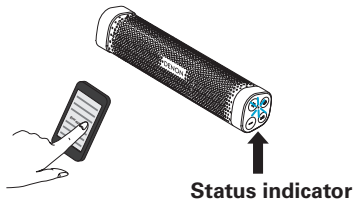


NOTE

- The rating of adapter should be less than DC 5 V, 2.4 A.
- Must be used with an approved adapter suitable for the countries where the requirement will be applied.

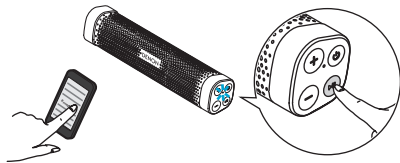
3. Playing Music from your Bluetooth Device (Pairing and Connecting)

- ① Activate the Bluetooth settings on you mobile device.
- ② Select "Envaya Mini" from the list of available Bluetooth devices. In a few seconds you will hear a fast 3 note tone from the speaker indicating that it is connected to your device. The status indicator stops blinking and remains illuminated.



4. Pairing additional Bluetooth Devices

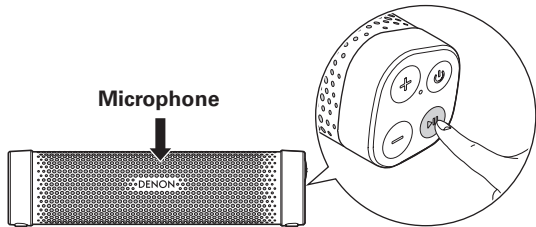
- ① Activate the Bluetooth settings on you mobile device.
- ② Press and hold the ►/|| button for 3 seconds until you hear a 3 tone beep.
- ③ Select "Envaya Mini" from the list of available Bluetooth devices. In a few seconds you will hear a fast 3 note tone from the speaker indicating that it is connected to your device. The status indicator stops blinking and remains illuminated.



5. Using the Speakerphone

Answering Calls: Press the ►/|| button on the right side of the speaker.

Ending Calls: Press the ►/|| button again.



To view the complete user manual, please visit manuals.denon.com/DSB100/ALL/EN/ or scan the QR code below using your smartphone.



Basic Troubleshooting

Speaker does not turn on

- To turn on the speaker, press and hold the power button for 2 seconds.

Cannot pair a Bluetooth device with the speaker

- Power On the speaker then press and hold the ►/|| button for 3 seconds until you hear a 3 tone beep. Make sure your mobile device has Bluetooth On and select “Envaya Mini” from the list of Bluetooth devices.

Speaker is turning off automatically

- To save battery power, the speaker is designed to turn off when no audio is played via Bluetooth for approximately 15 minutes.

Speaker is malfunctioning

- To reset the speaker, turn on the speaker then, press and release the POWER button, ►/|| button and BATTERY button simultaneously. Envaya Mini is reset.

Cannot conduct a call

- Hands-free phone calls cannot be conducted when a cable is connected to the AUX input. Remove the cable and try again.
- Not all mobile phones and Apps support Hands-free phone calling.

DENON[®]

www.denon.com

D&M Holdings Inc.

Printed in China 5411 11253 10AD