

DENON®

DCD-900NE  
Compact Disc Player

# Quick start guide

# Before you begin

## What's in the box

---

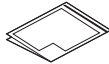
Quick start guide



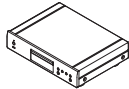
Safety Instructions



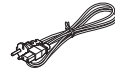
Cautions on Using Batteries



CD player



Power cord



Remote control (RC-1246)



2×R03/AAA batteries



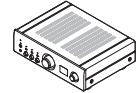
Audio cable



## Required for setup

---

Amplifier



Speakers



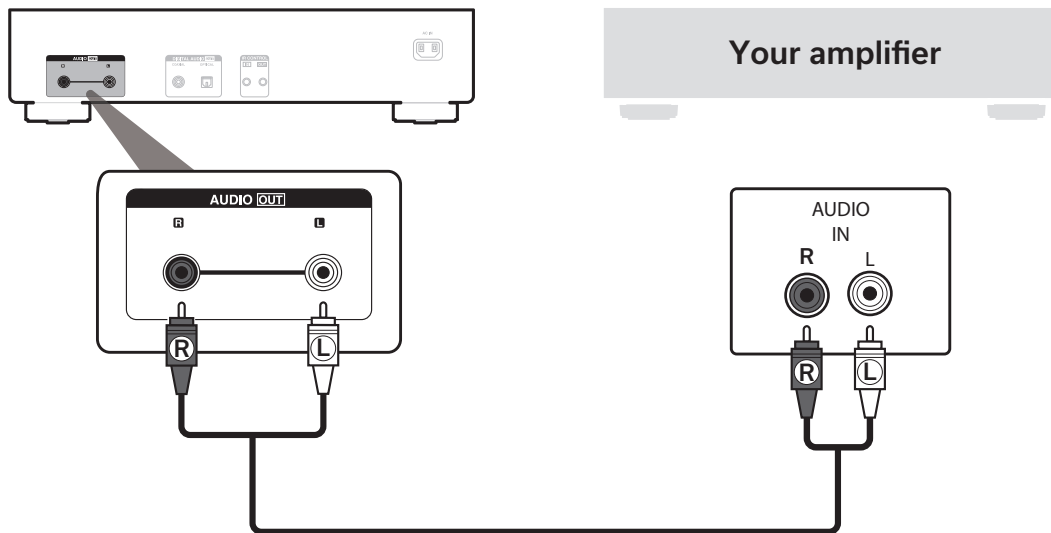
Speaker cables



# Setup

1

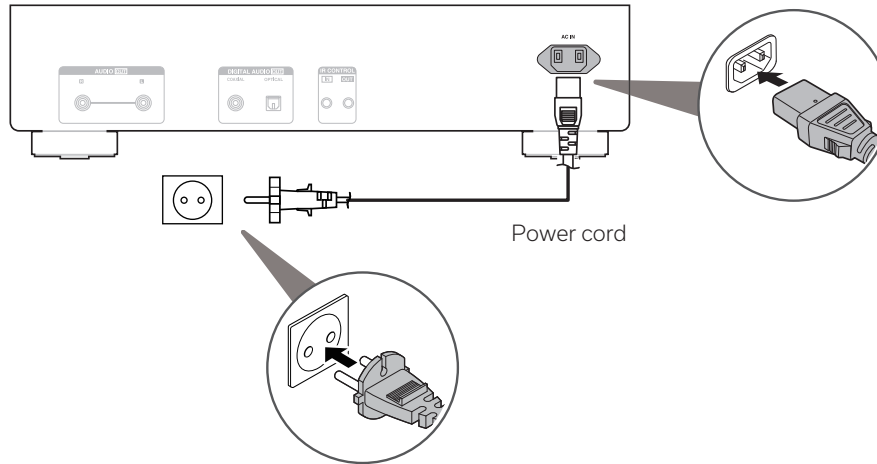
Connect DCD-900NE to the amplifier



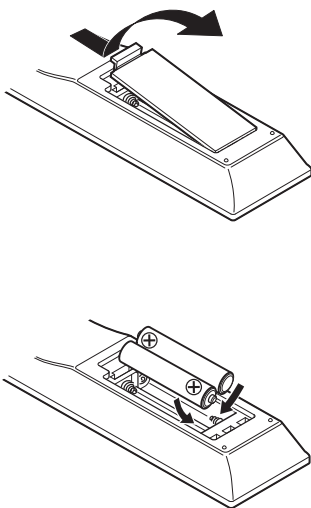
## 2

### Connect to power

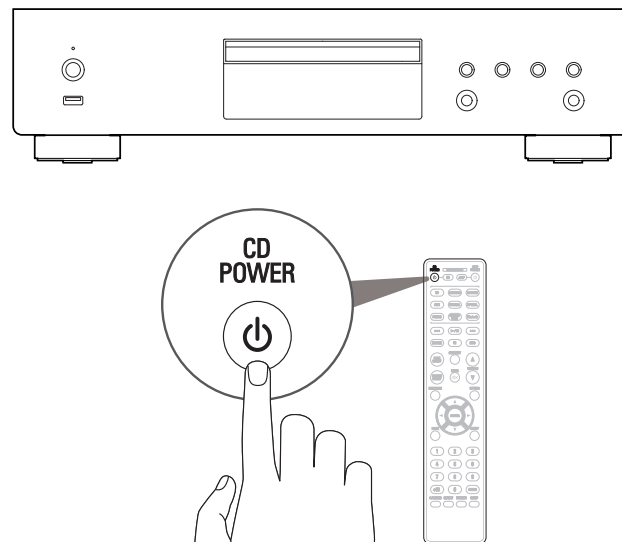
Connect the power cord between the DCD-900NE and a wall outlet.



### 3 Install batteries in the remote control




### 4 Turn the DCD-900NE's power on

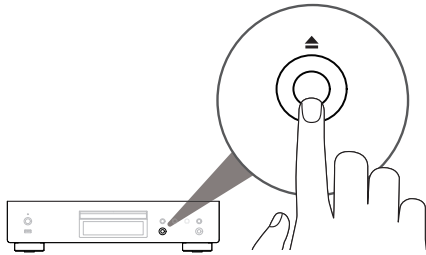


- Batteries can be taken out in reversed order.

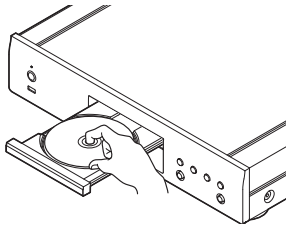
# 5

## Begin CD playback

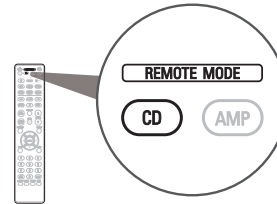
- 1 Press  to open the disc tray.



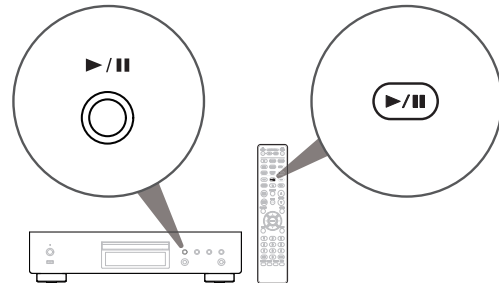
- 2 Place CD in the disc tray.



- 3 Press REMOTE MODE CD.  
Switch the remote control operating mode to this unit.



- 4 Press .  
Playback starts.



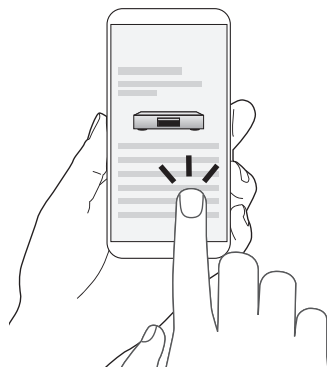
# Owner's manual

Refer to the online manual for other functions information and operation procedure details.

**[manuals.denon.com/DCD900NE/EU/EN/](https://manuals.denon.com/DCD900NE/EU/EN/)**



Online manual



For more information, visit **[www.denon.com](https://www.denon.com)**

**DENON®**

[www.denon.com](http://www.denon.com)

Printed in Vietnam 5411 11963 00AD  
© 2022 Sound United. All Rights Reserved.