

DENON

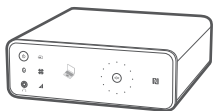
Quick Setup Guide

CEOL carino
Computer Audio System N-2

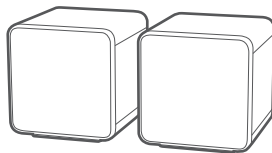
Start Here
Starten Sie hier
Commencez ici
Iniziare qui
Iniciar aquí
Start Hier
Starta här
Начните здесь
Zacznij tutaj



What's in the box



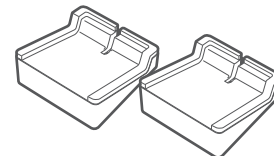
CEOL carino



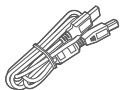
Speaker x 2



CEOL carino Base



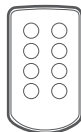
Speaker Base x 2



USB cable

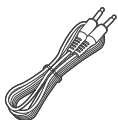


AC cable



Remote control

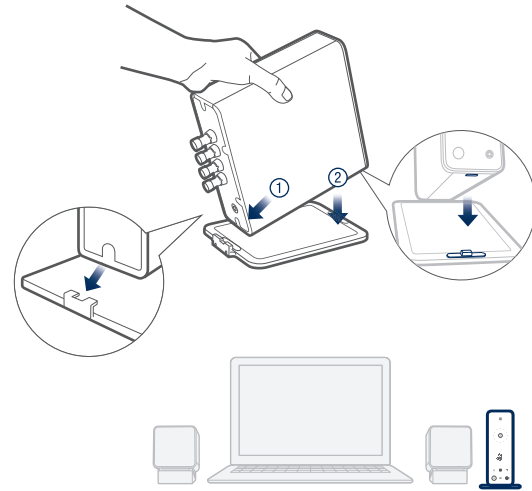
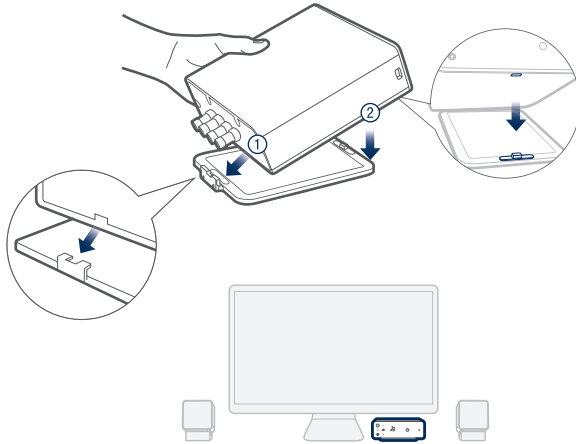
Optional



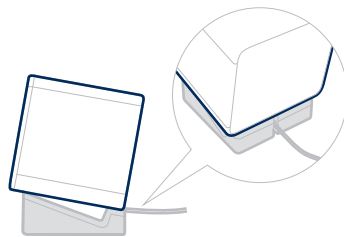
Stereo Mini Plug

For detailed instructions or assistance, please refer to the enclosed CD ROM manual or visit our support site: www.denon.com

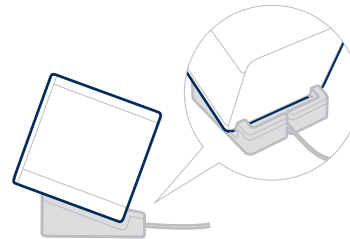
Attaching the base



Using the speaker base



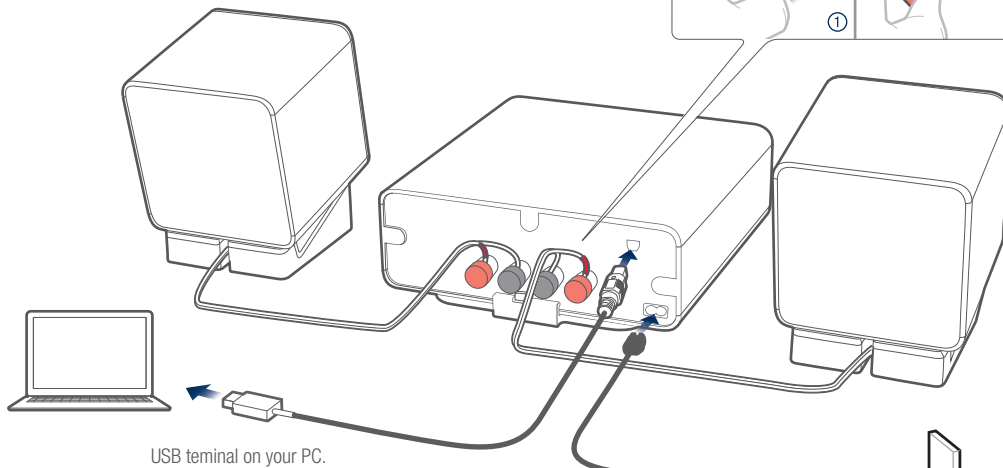
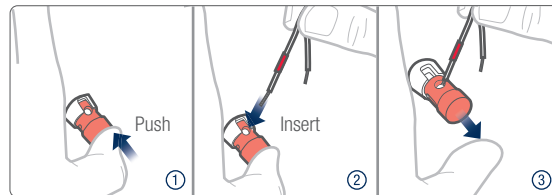
or



English
Deutsch
Français
Italiano
Español
Nederlands
Svenska
Русский
Polski

Connecting the CEOL carino

1. Connect the speakers



2. Connect your computer

3. Connect the power

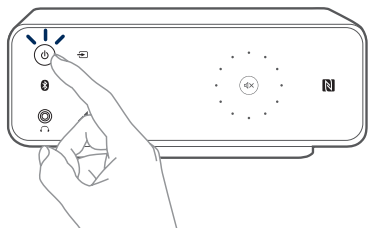
Note

Set "SPEAKER OPTIMIZATION" to "ON" if you are using Denon CEOL carino speakers or "OFF" if you are using other speakers.

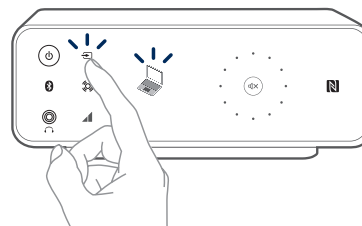


Enjoying music on your PC/MAC

1. Power on



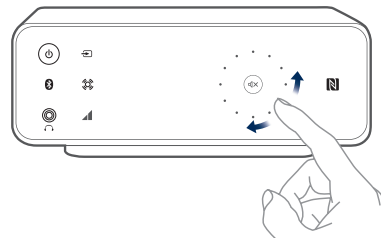
2. Select input source



3. Launch your music application and play your music



4. Adjust volume



Wide Sound

Enable the Wide Sound function to widen the sound field for movies or gaming.

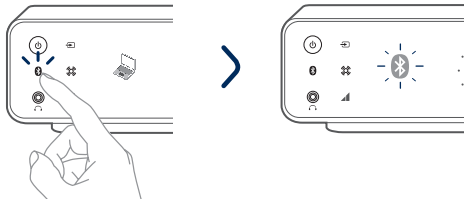


Auto Volume Adjust

Enable the Auto Volume Adjust function to automatically normalize wide volume level variations between different audio sources.

Enjoying music using Bluetooth

1. Press and hold the Bluetooth button on the front panel of the CEOL carino, until you see the Bluetooth logo flashing on the front panel

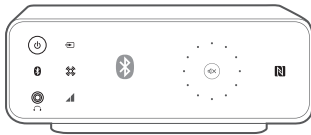


2. Activate the Bluetooth settings and search mode on your device

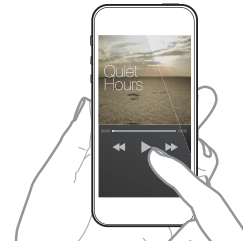


3. Select "CEOL carino" from the Bluetooth device list on your device

In a few seconds the flashing Bluetooth logo will stop. This will indicate that your device is now connected.



4. Play music using any app on your device

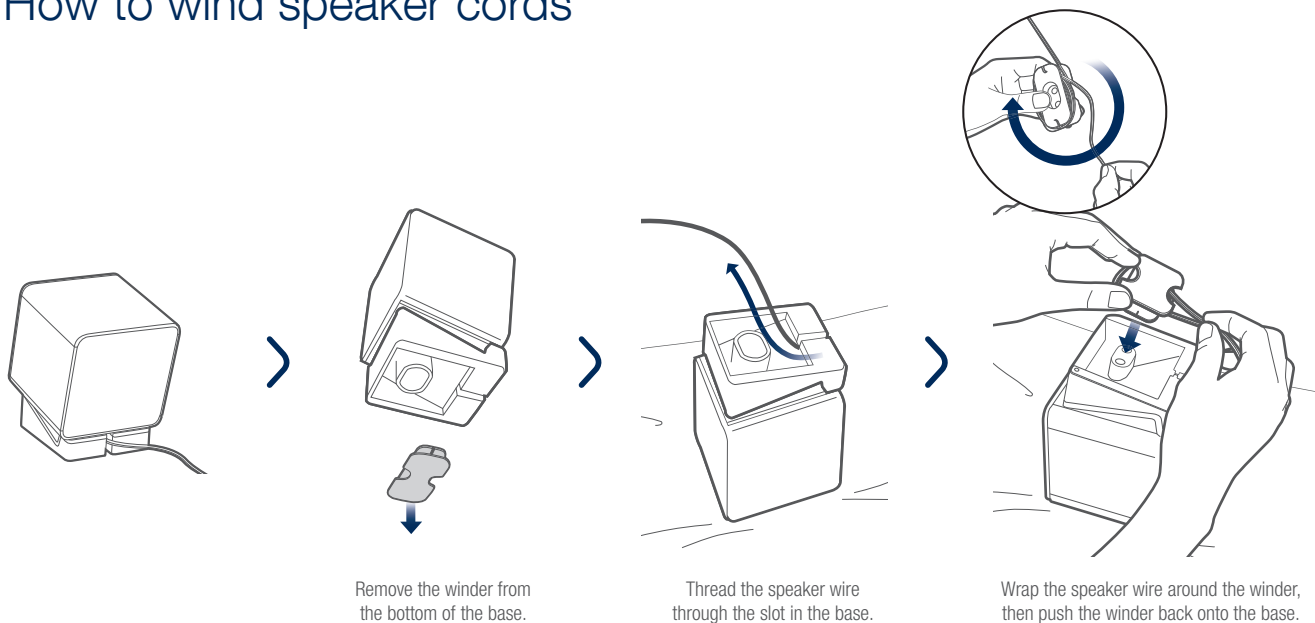


To reconnect a previously paired Bluetooth device, start at step 2.



Pair and connect your NFC capable device by gently touching it on the NFC logo on the front of CEOL carino.

How to wind speaker cords



Basic trouble shooting

No sound:

- Check all connections.
- Make sure the bare metal wire ends of the speaker wires are in contact with the metal part of the speaker terminals.

No sound from a connected PC:

- Make sure you have selected CEOL carino as the output device for your PC.
- Restart the music application or try a different music application.

Additional information

For more information about this product, scan the QR code using your mobile device or visit Denon Support at: manuals.denon.com/PMAN2/EU/EN/



CEOL carino

DENON

denon.com

D&M Holdings Inc.
Printed in China.
5411 11168 00AD