

# DENON®

## PMA-50

INTEGRATED AMPLIFIER

ENGLISH

FRANÇAIS

ESPAÑOL

# Quick Start Guide

Guide de démarrage rapide / Guía de inicio rápido

## Read Me First....

Lisez-moi en premier.... / Lea esto primero....

**Please do not return this unit to the store – call for assistance.**

**If you need help... :**

If you need additional help in solving problems, contact Denon customer service in your area.

**1-855-MY.Denon**

1-855-693-3666

Call for Assistance: Monday – Friday 10:00AM to 10:00PM E.S.T, Saturday 12:00PM to 8:00PM E.S.T

For frequently asked questions please visit [www.usa.denon.com/FAQ](http://www.usa.denon.com/FAQ)






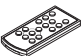
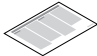



For US and Canada only

# Welcome

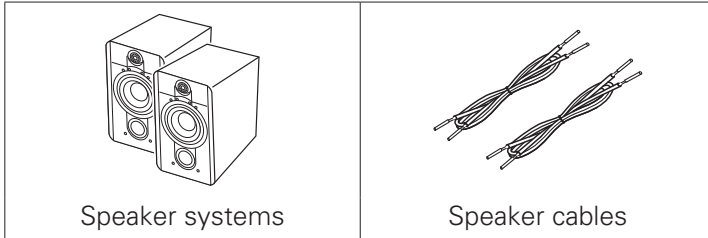
Thank you for choosing a Denon amplifier. This guide provides step-by-step instructions for setting up your amplifier.

# Before You Begin

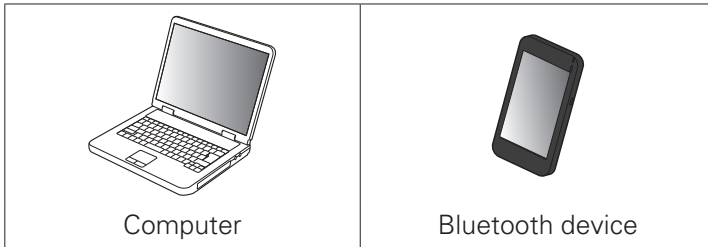
## What's In the Box

Quick Start Guide		Integrated Amplifier	
Owner's Manual		Power cord	
Safety Instructions		Remote control unit	
Notes on radio		Caps (silver)	
Warranty (for North America model only)		USB cable	

## Required for Basic connections



## Optional



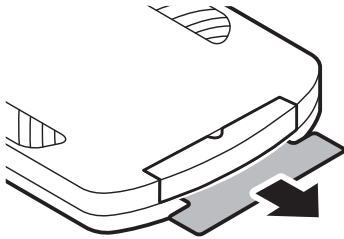
These drawings are for illustrative purposes only and may not represent the actual product(s).

# Setup

There are seven steps to the setup process.

- 1** Before using the remote control unit
- 2** Placing this unit
- 3** Installing the driver software onto your PC (Windows OS only)
- 4** Connecting the speakers to the amplifier
- 5** Plug the power cord into a power outlet
- 6** Enjoying music using PC or Mac
- 7** Enjoying music using Bluetooth

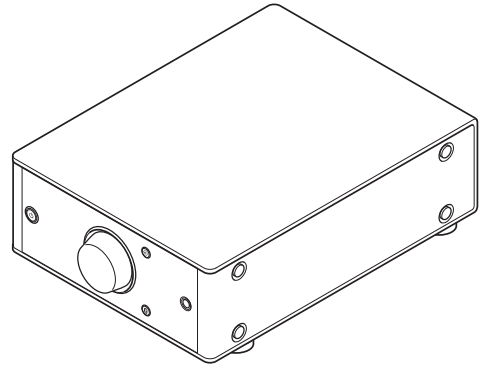
## 1 Before using the remote control unit



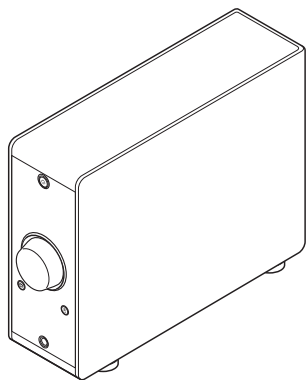
## 2 Placing this unit

### □ Horizontal placement

The feet are initially attached to the unit for horizontal installation.

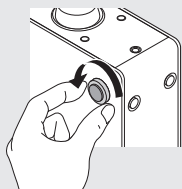


## ❑ Vertical placement

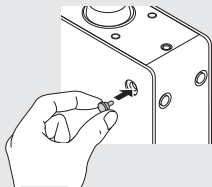


### 1 Remove the feet.

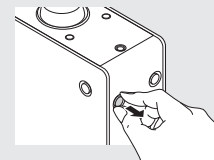
- Rotate each of the 4 feet counter-clockwise to remove.



### 2 Insert the supplied caps (silver) into the holes from which the feet were removed.



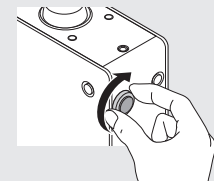
### 3 Remove the cap (black).



#### NOTE

Be careful not to damage your nails when removing the caps. If necessary, use a thin-tipped tool to remove the caps. However, be careful not to damage the unit when using tools.

### 4 Rotate the removed feet clockwise to attach them.



### 3 Installing the driver software onto your PC (Windows OS only)

1 Download the dedicated driver from the “Download” section of the PMA-50 page of the Denon website (<http://www.denon.com/pages/home.aspx>) onto your PC.

2 Unzip the downloaded file.

3 Select the 32 bit or 64 bit exe file that matches your Windows operating system, and double-click the file.

### 4 Install the driver.

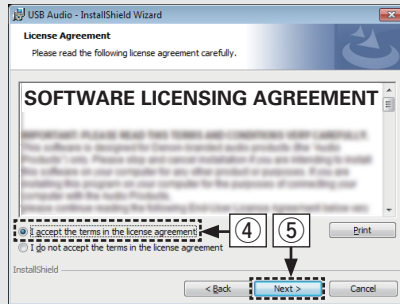
- 1 Select the language to use for the installation.
- 2 Click “OK”.



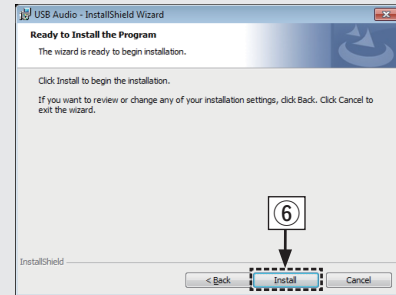
- 3 The wizard menu is displayed. Click “Next”.



- ④ Read the Software Licensing Agreement, and click "I accept the terms in the license agreement".
- ⑤ Click "Next".

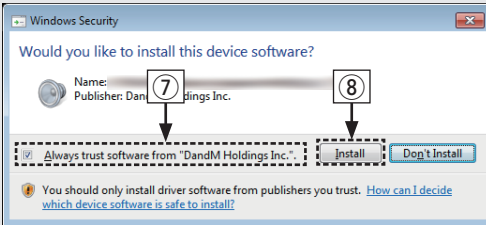


- ⑥ Click "Install" on the installation start dialog.
  - The installation starts. Do not perform any operation on the PC until the installation is completed.

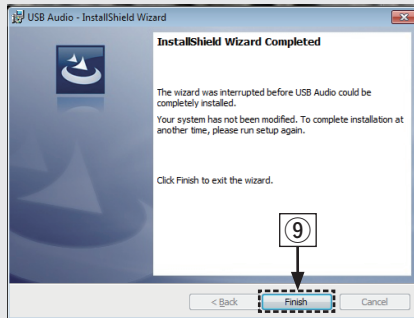




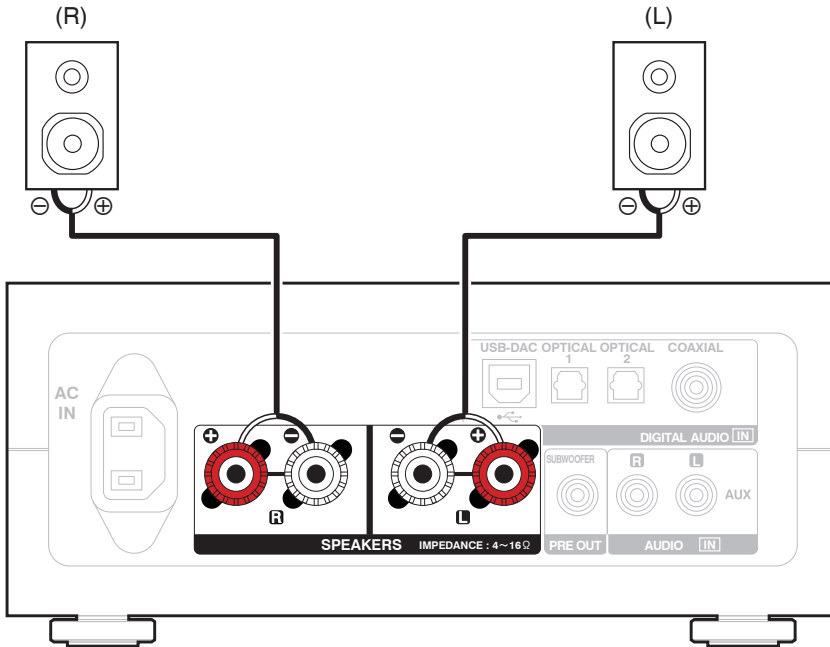
- ⑦ In the Windows security dialog, select “Always trust software from DandM Holdings Inc.”.
- ⑧ Click “Install”.



- ⑨ When the installation is completed, click “Finish”.

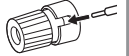
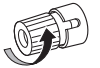


## 4 Connecting the speakers to the amplifier

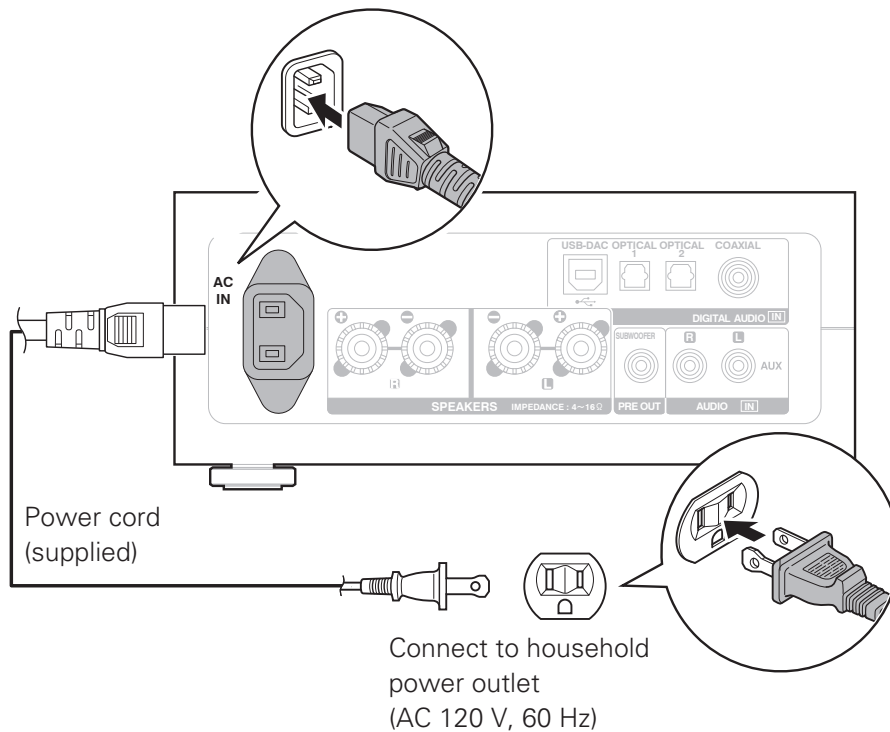


### Connecting the speaker cables

- ① Peel off about 3/8 inch (10 mm) of sheathing from the tip of the speaker cable, then either twist the core wire tightly or apply solder to it.
- ② Turn the speaker terminal counterclockwise to loosen it.
- ③ Insert the speaker cable's core wire to all the way into the speaker terminal.
- ④ Turn the speaker terminal clockwise to tighten it.



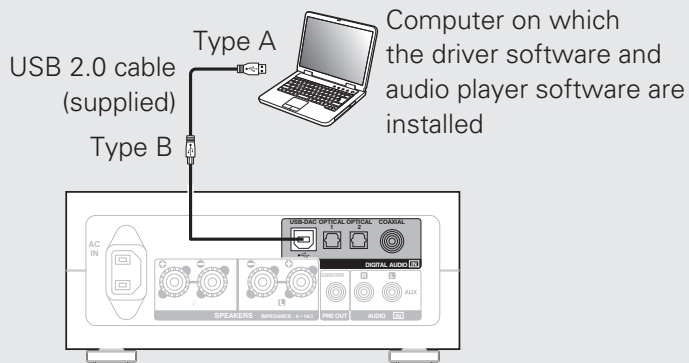
# 5 Plug the power cord into a power outlet



## 6 Enjoying music using PC or Mac

### ❑ Connect to PC or Mac

#### 1 Connect to PC or Mac.

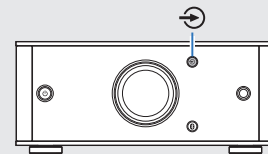


#### 2 Press on this unit.

- When the unit power is turned on, the computer automatically finds and connects to the unit.

### ❑ Listen to PC or Mac Audio

#### 1 Press to change the input source to “USB-DAC”.

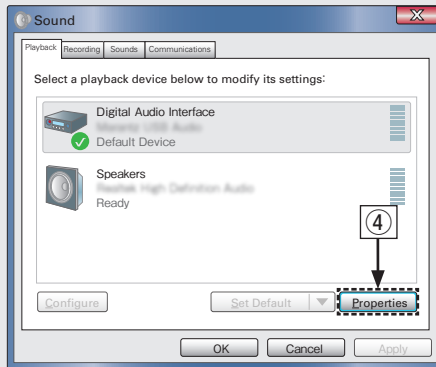


#### 2 Set the audio signal destination to this unit on the computer.

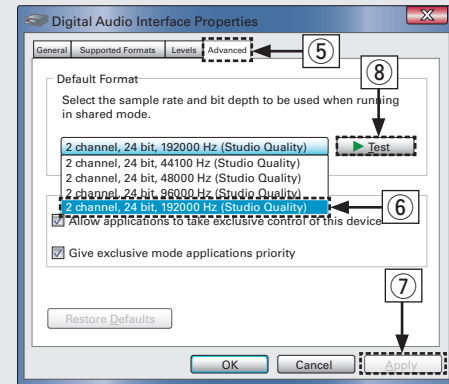
##### [Windows OS]

- ① Click the “Start” button and click “Control Panel” on the PC.
  - The control panel setting list is displayed.
- ② Click the “Sound” icon.
  - The sound menu window is displayed.

- ③ Check that there is a checkmark next to “Default Device” under in “Digital Audio Interface” of the “Playback” tab.
  - When there is a checkmark for a different device, click “Denon USB Audio” and “Set Default”.
- ④ Select “Digital Audio Interface” and click “Properties”.
  - The Digital Audio Interface Properties window is displayed.

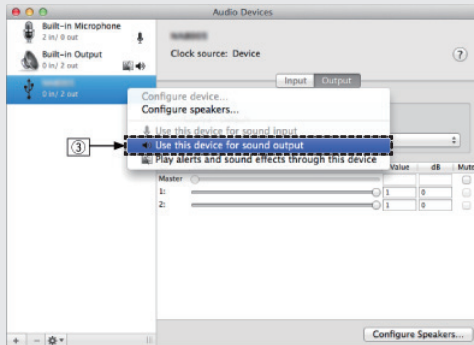


- ⑤ Click the “Advanced” tab.
- ⑥ Select the sampling rate and bit rate to be applied to the D/A converter.
  - It is recommended that “2 channel, 24 bit, 192000 Hz (Studio Quality)” is selected.
- ⑦ Click “Apply”.
- ⑧ Click “Test”.
  - Check that audio from this unit is output from the PC.

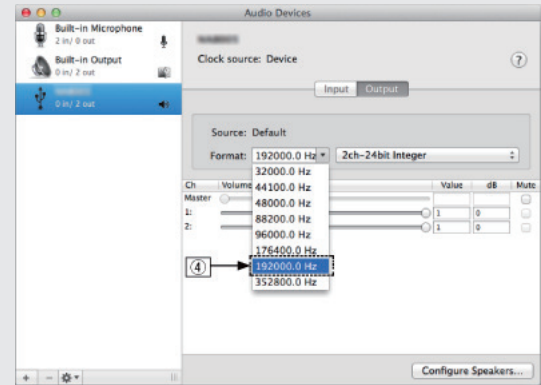


## [Mac OS X]

- ① Move the cursor to “Go” on the computer screen, and then click “Utilities”.
  - The utility list is displayed.
- ② Double-click “Audio MIDI Setup”.
- ③ Check that “Use this device for sound output” is checked in “PMA-50”.
  - If a different device is checked, select and “Secondary click” on “PMA-50”, and then select “Use this device for sound output”.



- ④ Select the “PMA-50” format.
  - It is normally recommended to set the format to “192000.0 Hz” and “2ch-24 bit Interger”.



- ⑤ Quit Audio MIDI Setup.

- 3** Play back a music file with music playback software such as Windows Media Player, iTunes, foobar2000, Audirvana Plus and JRiver Media Center.

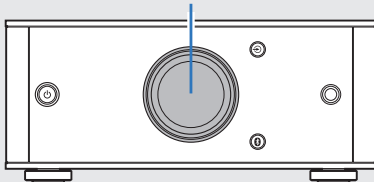
PCM  
192kHz  
USB-DAC

The type of music file and sampling frequency are displayed.

**4** Adjust the volume.

- The volume level appears on the display.

Volume control knob




**NOTE**

- Adjust the volume to an appropriate level on the computer.
- Further settings might be required in your dedicated media player software such as JRiver to enable high resolution audio playback. Please refer to the owner's manual of the software.

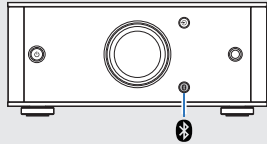


Please refer to the owner's manual about the required specifications of suiting computer.

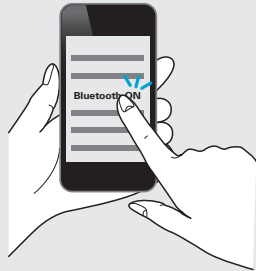
## 7 Enjoying music using Bluetooth

**1** Press  for 3 seconds or longer.

- “Pairing” appears on the display of the unit.

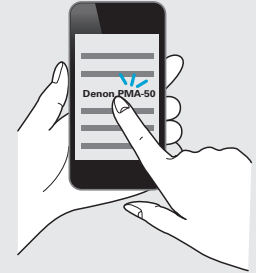


**2** Activate the Bluetooth settings and search mode on your device.




**3** Select “Denon PMA-50” from the Bluetooth device list on your device.

- “At the end of the pairing, the device name appears on the display of this unit.



**4** Play music using any app on your device.



- Pair and connect your NFC capable device by gently touching it on the NFC logo ().
- Enter “0000” when the password is requested on the screen of the Bluetooth device.



# Owner's Manual

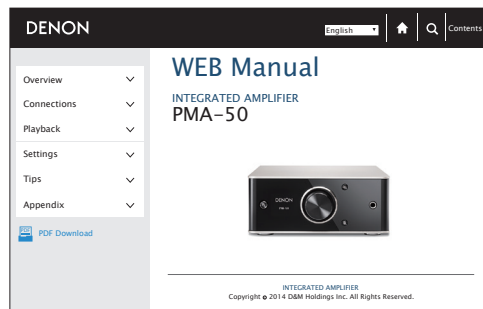
Please reference to the Owner's Manual for more details about the setup and operation of the amplifier and its features.

## ❑ Online Version

Enter the following URL into your web browser:  
[manuals.denon.com/PMA50/NA/EN/](http://manuals.denon.com/PMA50/NA/EN/)



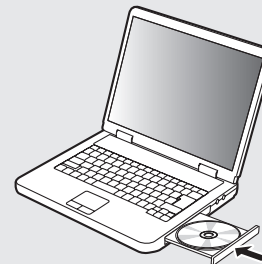
Online Manual



## ❑ Printable Version

Access the print version of the owner's manual from the included CD-ROM or select the "PDF Download" link from the Online Version.

**1** Insert the disc into your PC.



**2** Follow the screen or double click on the PDF file.

**DENON®**

[www.denon.com](http://www.denon.com)

D&M Holdings Inc.  
Printed in China 5411 11248 00AD